

HOW TO SIGN UP YOUR CLUB WITH



NASEF
NORTH AMERICA SCHOLASTIC
ESPORTS FEDERATION™

FOR ADVISORS



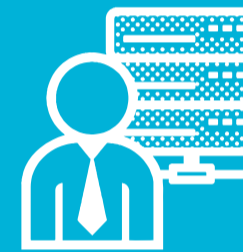
Do you know students who are gamers, streamers, or esports fans? Are you looking to support a Club and contribute to the growth of students as leaders in their own playing field? Creating your Club through NASEF provides opportunities and free resources for your students to become society's game changers: educated, productive, and empathetic individuals.

STEP 1: FIND A CLUB OR STUDENT



Find a gaming or esports club on campus or within the community-based organization. Have a conversation with colleagues, students and parents.

STEP 2: REVIEW THE GUIDELINES



Before signing up, review the Club Guidelines. Abiding by a code of conduct is important, and students will need to meet eligibility requirements to participate.

STEP 3: IDENTIFY A GENERAL MANAGER



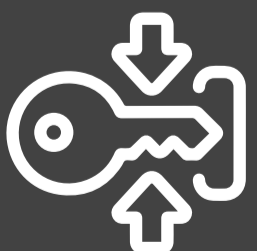
As the General Manager, you are responsible for supervising students, providing support to keep the Club moving forward. You're not alone, we provide toolkits and resources for you.

STEP 4: BUILD YOUR CLUB



As General Manager, you are also responsible for managing the Club roster in the GM Portal. There is no limit! To add students, make sure they have a parent or guardian's permission. You will also be responsible for checking for Student Eligibility for club participation and working with your campus or community-based organization on ways to support the Club.

THAT'S IT.



Your Club will receive free access to the Club Portal for toolkits and other resources. You'll also have access to NASEF tournaments (hosted by Generation Esports). GLHF!

For more information, visit [NASEF.org](https://www.nasef.org)

or email us at [info@NASEF.org](mailto:info@nasef.org)