

# HOW TO ACTIVATE YOUR CLUB WITH



**NASEF**  
NORTH AMERICA SCHOLASTIC  
ESPORTS FEDERATION™

**FOR ADVISORS**



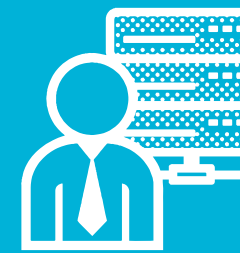
Do you know students who are gamers, streamers, or esports fans? Are you looking to support a Club and contribute to the growth of students as leaders in their own playing field? Activating your Club through NASEF provides opportunities and free resources for your students to become society's game changers: educated, productive, and empathetic individuals.

## STEP 1: FIND A CLUB OR STUDENT



Find a **gaming or esports Club** on campus or within the community-based organization. Have a conversation with colleagues, students and parents. Don't know where to start? Our **recap video** shows a snapshot of last season's fun!

## STEP 2: REVIEW THE GUIDELINES



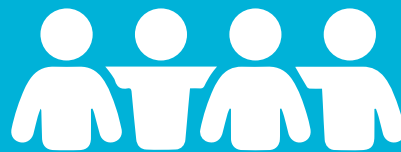
Before filling out the Club activation form, **review the Club Guidelines**. Support from your administrator and IT director will be required to activate your Club. Make time to inform your administration and IT director about the effort!

## STEP 3: IDENTIFY A GENERAL MANAGER



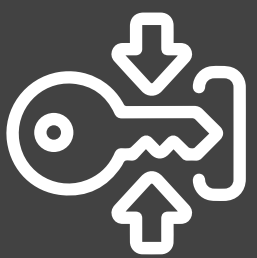
As the General Manager, you are responsible for supervising students, providing support to keep the Club moving forward. Here's **more information** on the role of the GM in our Federation.

## STEP 4: BUILD YOUR CLUB



As General Manager, you are also responsible for managing the Club roster in the GM Portal. There is no limit! To add students, you'll need student and parent or guardian's contact information. You will also be responsible for checking for **Student Eligibility** for club participation and working with your campus or community-based organization on ways to support the Club.

## THAT'S IT.



After you complete all the necessary forms, your Club will receive free access to the Club Portal for toolkits and other resources. You'll also have access to League Competition information for this season. **GLHF!**

For more information, visit [esportsfed.org](https://esportsfed.org)

or email us at [info@esportsfed.org](mailto:info@esportsfed.org)